

## Animal Detectives

### What should I already know?

- Recognise and name farm animals.
- Recognise and name common animals that live in contrasting climates such as deserts (hot and cold) and the jungle.
- To identify a range of nocturnal animals.

### Key Knowledge

- There are different types of animals that we might see such as: birds, mice, frogs, toads, cats, dogs, foxes and snakes.
- Animals have similar and different features which means they look different for example:
- Cats, dogs, foxes and mice have fur, 4 legs, 4 feet and a tail.
- Snakes have scales.
- Snakes do not have legs.
- Birds have 2 legs, feathers, wings and a beak.
- Animals have a head.

### Key Vocabulary linking to pictures in bold

#### **birds**

pigeon



magpie



#### **mouse**



#### **frog**



#### **toad**



#### **cat**



#### **dog**



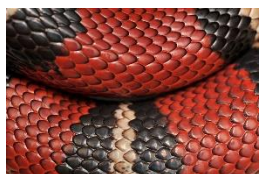
#### **fox**



#### **snake**



#### scales on a snake



#### fur



#### feathers

