

## From desert to jungle

### What should I already know?

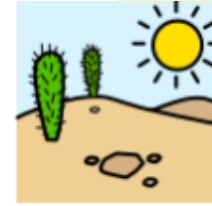
- Be able to describe their environment and changes in the weather liking to Autumn and Winter.
- Name and describe farm animals and where they live.
- Understand the following vocabulary: **sunny, rainy, warm, hot, dry, wet** and **ice**.

### Key Knowledge

- There are places around the world that are different to where we live.
- Some **deserts** are **sandy, hot** and **dry**.
- These animals live in **hot deserts**: **camels, scorpions, lizards** and **ostriches**.
- **Hot desert** animals live there because their body helps them to live there for example, **camels** have long eyelashes to keep the sand out of their eyes.
- **Polar deserts** are **cold** with lots of **ice**.
- The **jungle** is **rainy** and **warm** and **wet**. It has tall trees.
- These animals live in the **jungle**: **tiger, gorilla, monkey, snakes** and **frogs**.
- **Jungle animals** live there because their body likes the **wet, warm weather**. They can also climb the tall trees.

### Key Vocabulary linking to pictures in bold

#### Sandy, hot deserts



camel



scorpion



lizard

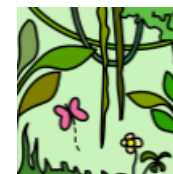


ostrich

#### Cold, polar deserts



#### Warm, wet jungle



tiger



gorilla



snake



frog